

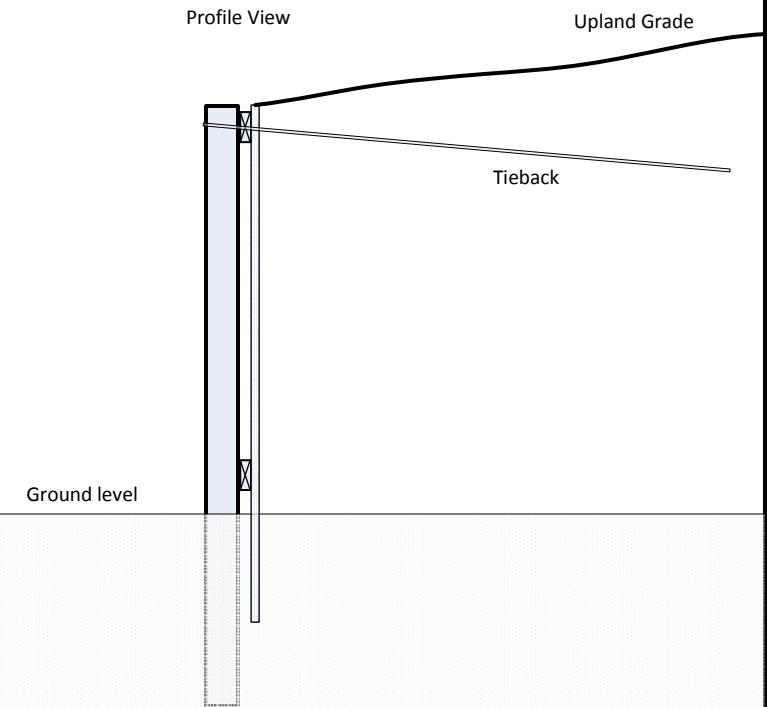
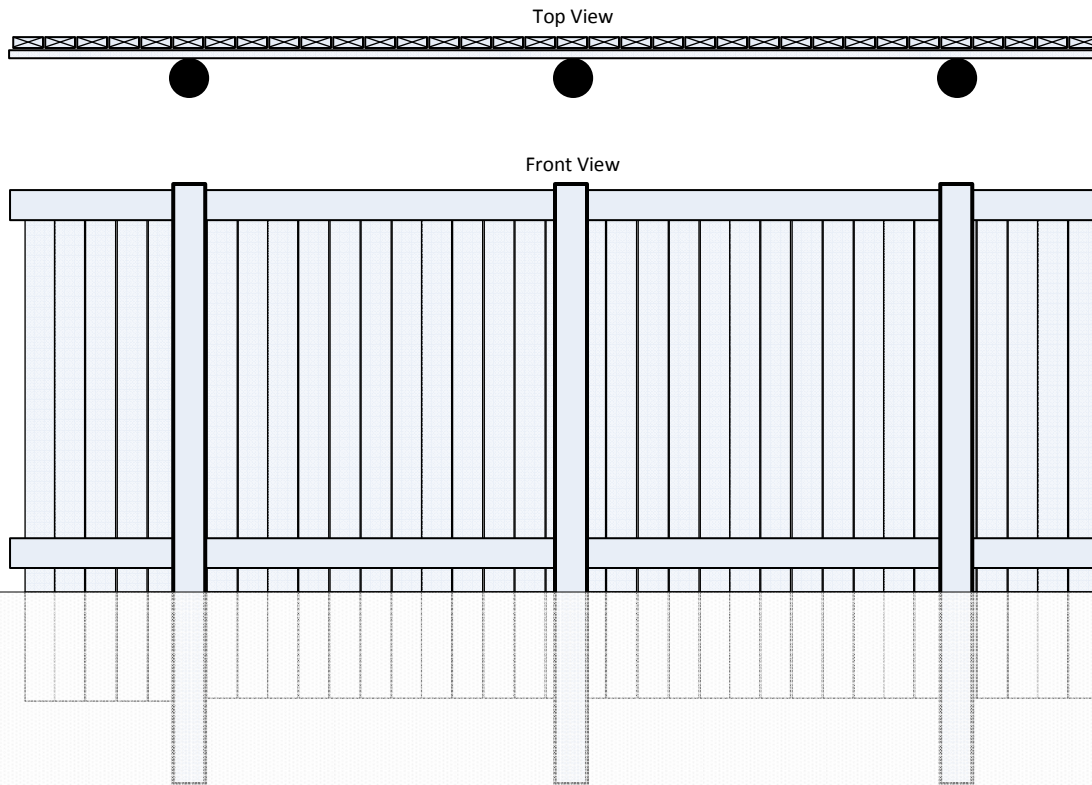
Prepared By: Florida Shoreline & Foundation Experts, LLC
6504 Superior Ave.
Sarasota, FL 34231
941-927-1410

CBC 1258622

Scale: 1/4" = 1'

TYPICAL WOOD RETAINING WALL

- Pilings to be 8" diameter 2.5 C.C.A. pressure treated, submerged 40% of their length into the lake bottom. Spacing to be determined after on-site inspection.
- Horizontal whalers to be 2" x 8" 2.5 C.C.A. pressure treated timbers.
- Vertical panels to be 2" x 8" 2.5 C.C.A. pressure treated timbers.
- All fasteners to be hot dipped galvanized or better.
- Tieback and deadmen spacing and materials to be determined after on-site inspection.
- Heavy duty filter fabric to be placed on the landward side of wall to help prevent soil loss.



For illustration purposes only. Actual dimensions and materials may vary and will be determined by the contract and site conditions.